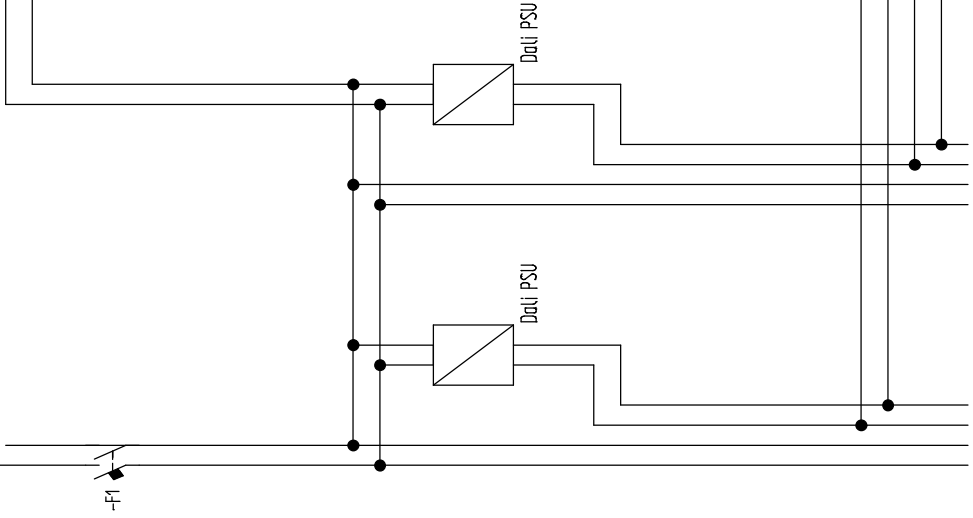


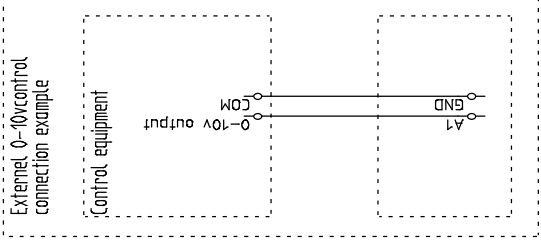
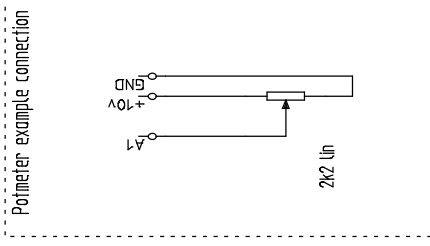
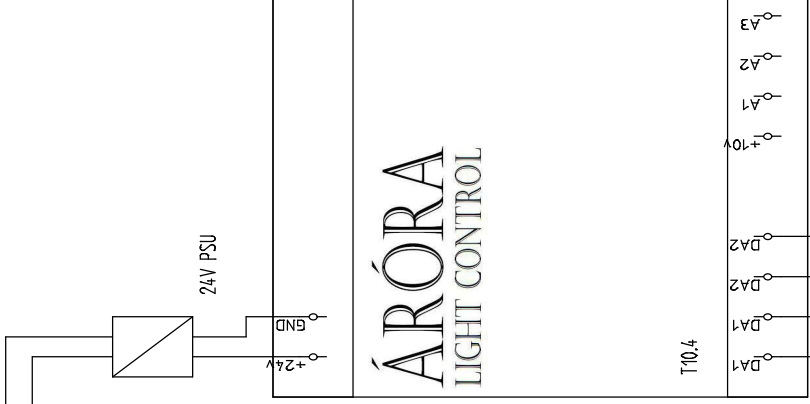
ÁRÓRA LIGHT CONTROL



Hedevej 23 - 6240 Løgumkloster - www.mckautomatik.dk - info@mckautomatik.dk



GND - A1: Lightstrength DA1 0-100% 0-10V
 GND - A2: Lightcolor DA1 + DA2 2700-6500 Kelvin 0-10V
 GND - A3: Lightstrength DA2 0-100% 0-10V



Dati string 1

Dati string 2

Fig. A

One 0-10v lightstrength input - fixed differentiated output.
DA2 is always weaker than DA1.

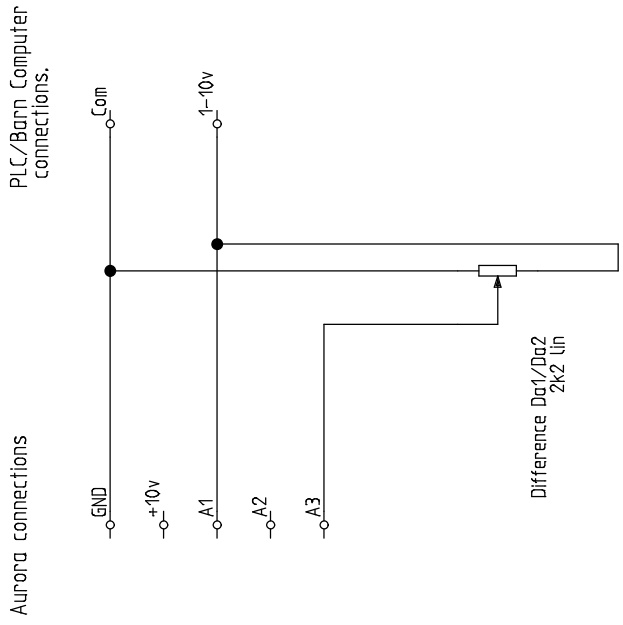


Fig. B

One POT lightstrength input - fixed differentiated output.
DA2 is always weaker than DA1.

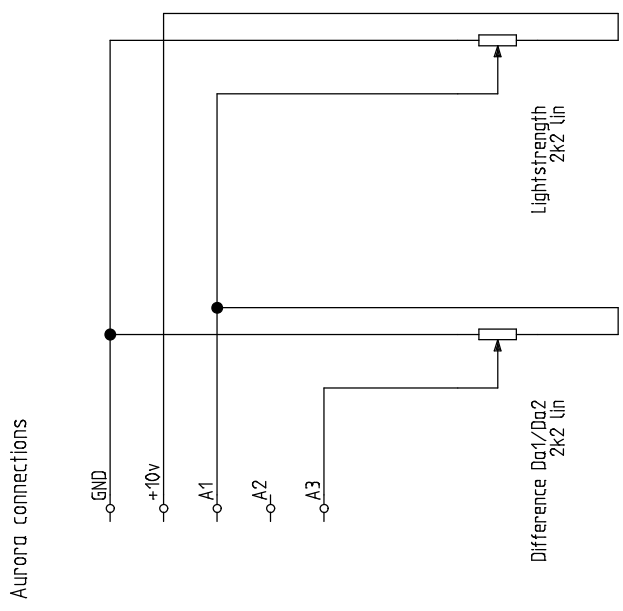


Fig. C

Two 0-10v lightstrength input - One color 0-10v input.

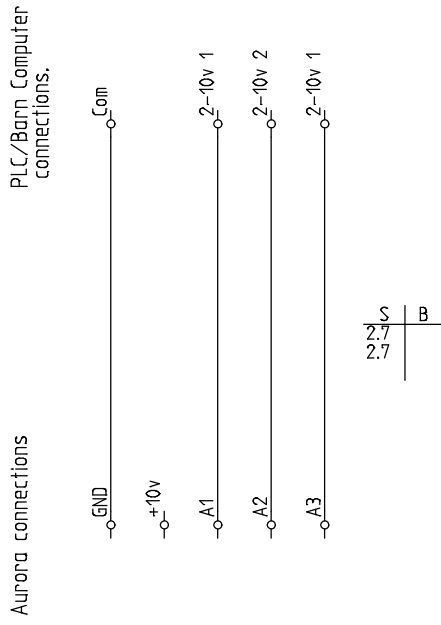


Fig. D

Relay off function on Dati bus (Always 230v to lamps)

